

15<sup>TH</sup> ANNUAL INVESTMENT COMMUNITY CONFERENCE

# ENBRIDGE DAY

## 2013



### Major Projects

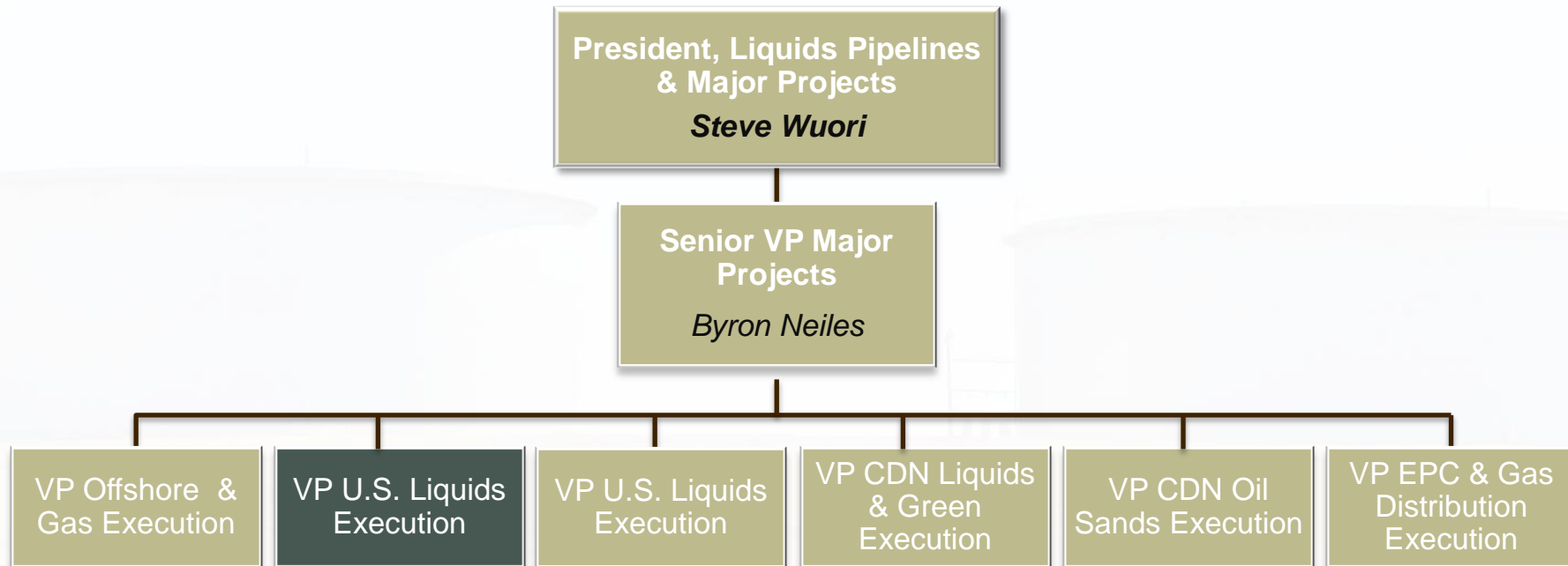
Byron Neiles

Senior Vice President, Major Projects

This presentation includes certain forward looking information (FLI) to provide Enbridge shareholders and potential investors with information about Enbridge and management's assessment of its future plans and operations, which may not be appropriate for other purposes. FLI is typically identified by words such as "anticipate", "expect", "project", "estimate", "forecast", "plan", "intend", "target", "believe" and similar words suggesting future outcomes or statements regarding an outlook. Although we believe that our FLI is reasonable based on the information available today and processes used to prepare it, such statements are not guarantees of future performance and you are cautioned against placing undue reliance on FLI. By its nature, FLI involves a variety of assumptions, risks, uncertainties and other factors which may cause actual results, levels of activity and achievements to differ materially from those expressed or implied in our FLI. Material assumptions include assumptions about: the expected supply and demand for crude oil, natural gas and natural gas liquids; prices of crude oil, natural gas and natural gas liquids; expected exchange rates; inflation; interest rates; the availability and price of labour and pipeline construction materials; operational reliability; anticipated in-service dates and weather.

Our FLI is subject to risks and uncertainties pertaining to operating performance, regulatory parameters, weather, economic conditions, exchange rates, interest rates and commodity prices, including but not limited to those discussed more extensively in our filings with Canadian and US securities regulators. The impact of any one risk, uncertainty or factor on any particular FLI is not determinable with certainty as these are interdependent and our future course of action depends on management's assessment of all information available at the relevant time. Except to the extent required by law, we assume no obligation to publicly update or revise any FLI, whether as a result of new information, future events or otherwise. All FLI in this presentation is expressly qualified in its entirety by these cautionary statements.

This presentation will make reference to certain financial measures, such as adjusted net income, which are not recognized under GAAP. Reconciliations to the most closely related GAAP measures are included in the earnings release and also in the Management Discussion and Analysis posted to the website.



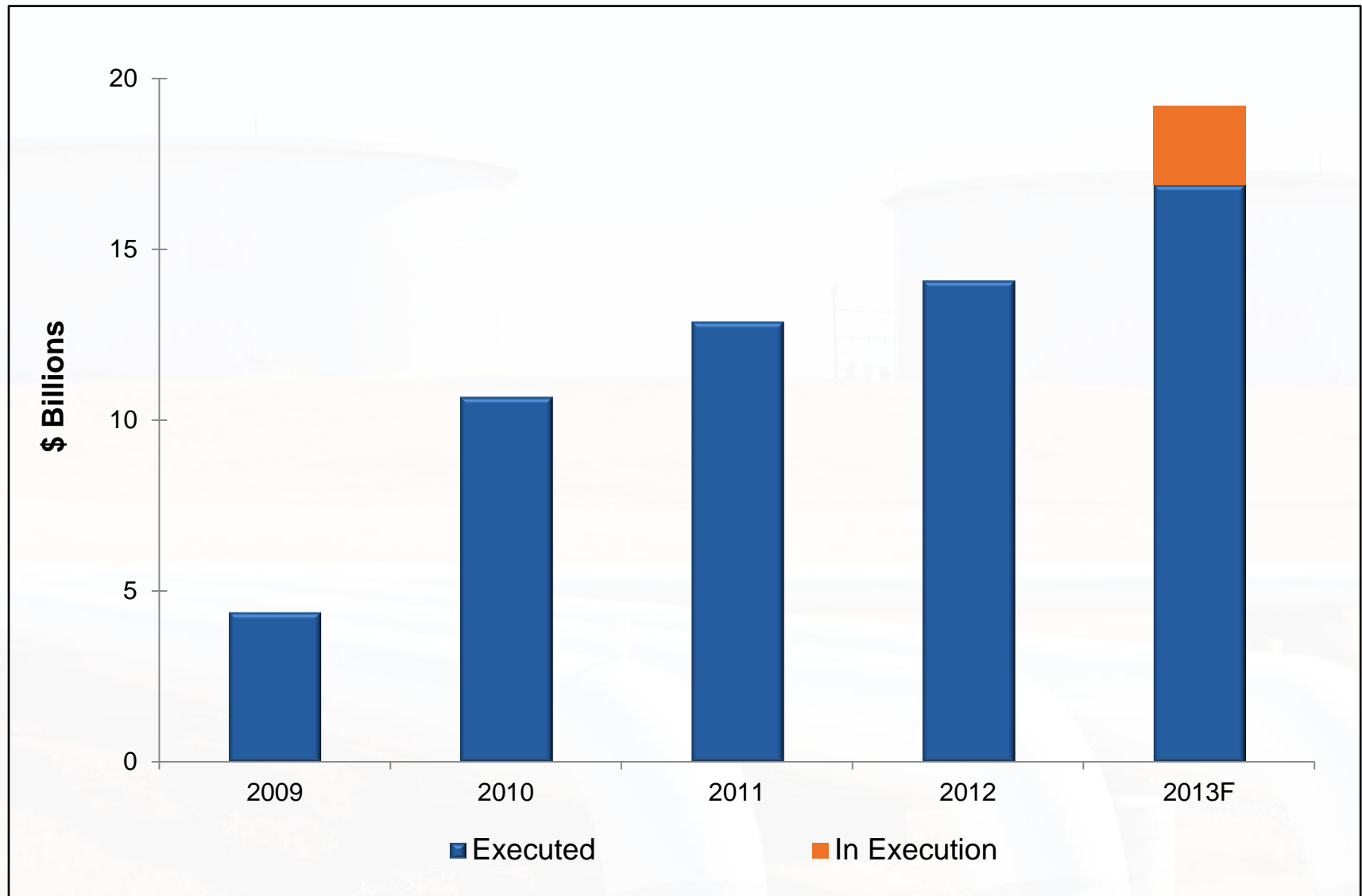
## New for 2013

- Additional VP US Liquids Execution
- 15 new projects

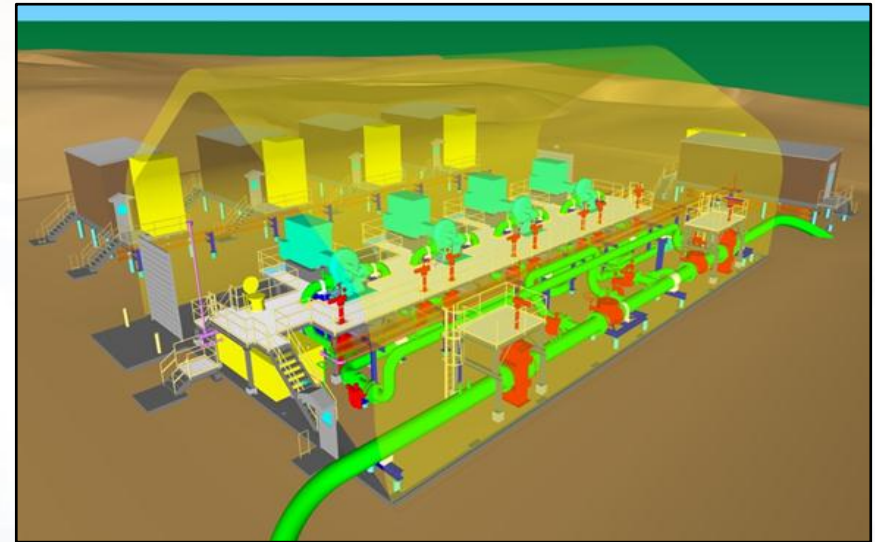
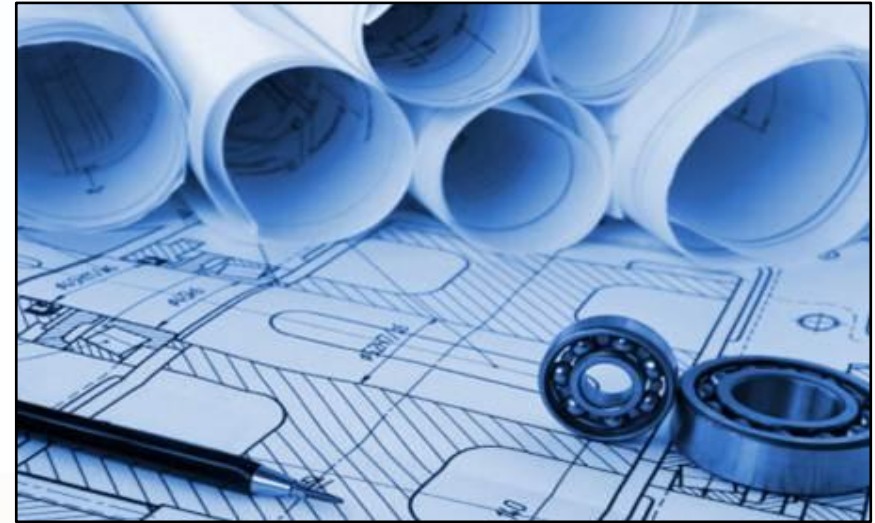
## Stats

- Staff – 1,400+
- Field – 10,000+
- Portfolio – \$23B

# Cumulative Executed Capital

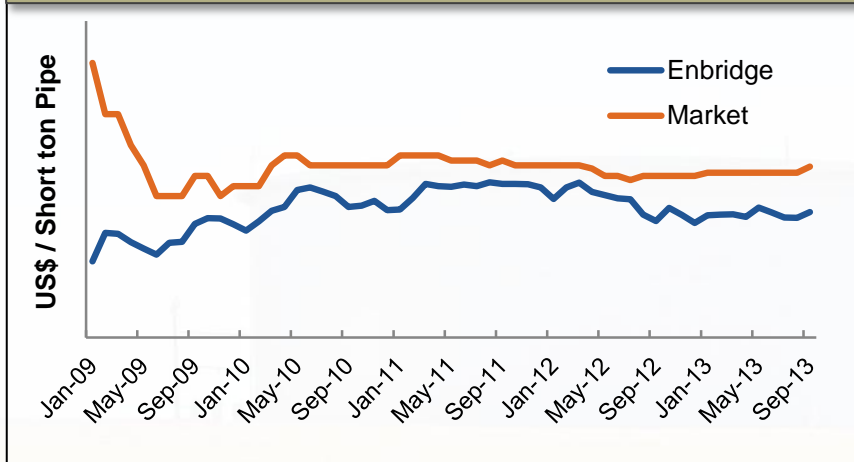


- Early scope definition
- Well known corridors
- Comprehensive historic costs
- Standardized designs
- Reliable cost estimates and schedules

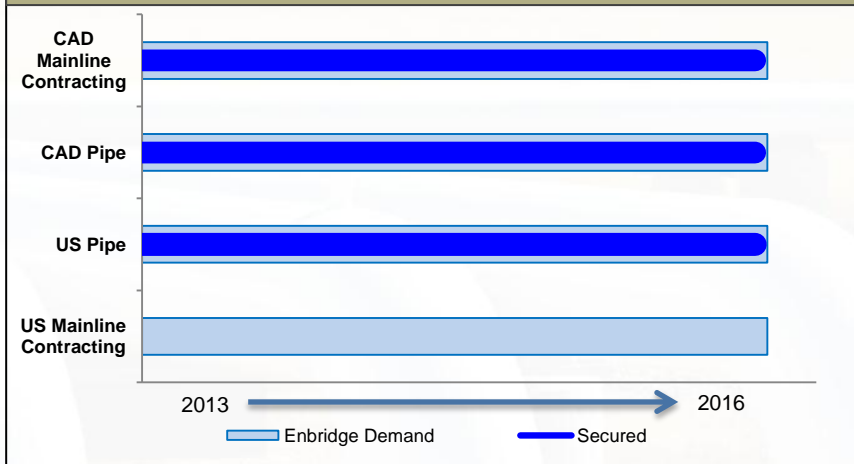


- Multi-year goods & services frame agreements
- Growing & diversifying supply chains
- Up to 70% of costs locked-in
- Scalable workforce
- Zero incident quality culture

### Enbridge Pipe vs. Market Pricing



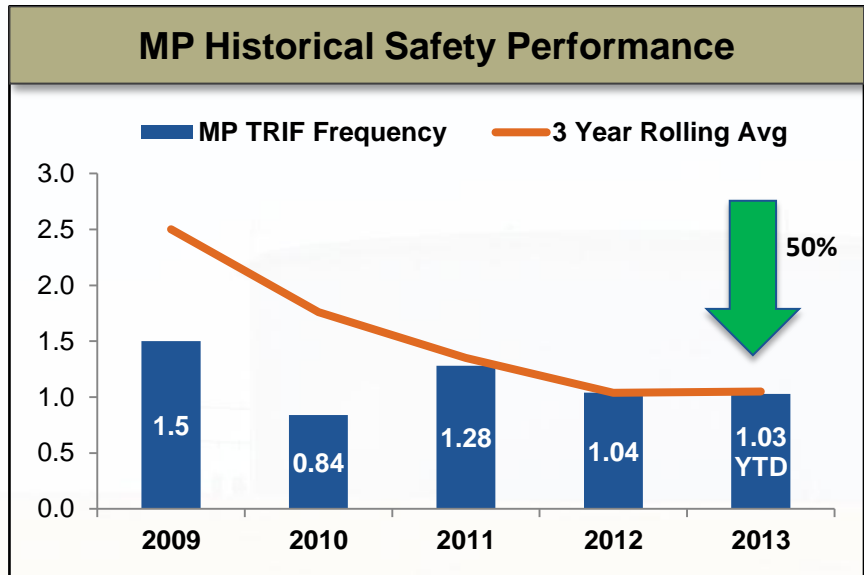
### De-Risking the Supply Chain



- 100% received; 90% on time
- 40% of US permits received ahead of statutory timelines
- 6 key Oil Sands applications required no hearings
- 6 major applications approved by the NEB in less than 22 months
- Emphasis on integrity & safety

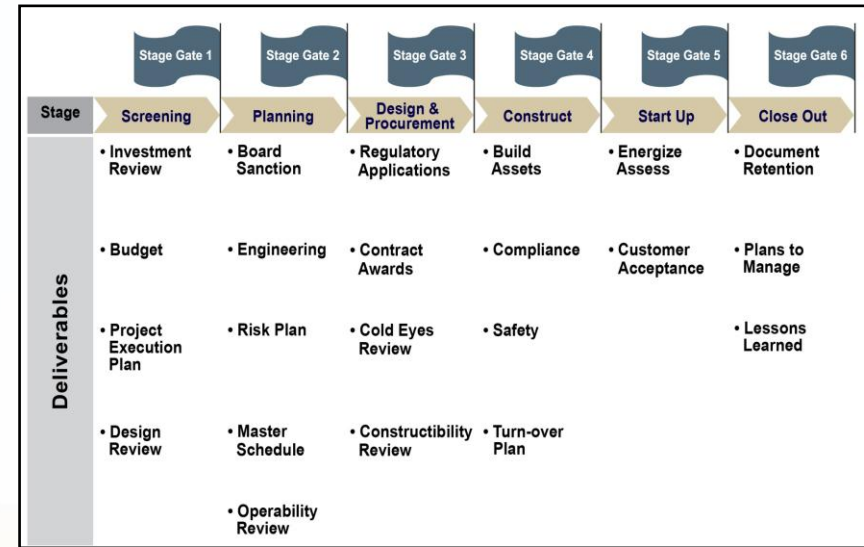


- 10,000+ temporary workforce
- Zero incident culture alignment with contractors
- Aggressive focus on leading indicators
- Prevention, training and surveillance
- Enbridge led industry round tables





- Repeatability
- Disciplined control: cost, schedule and quality
- Rigorous risk identification and mitigation
- Extensive governance and reporting
- Experienced workforce



- **The Project:**

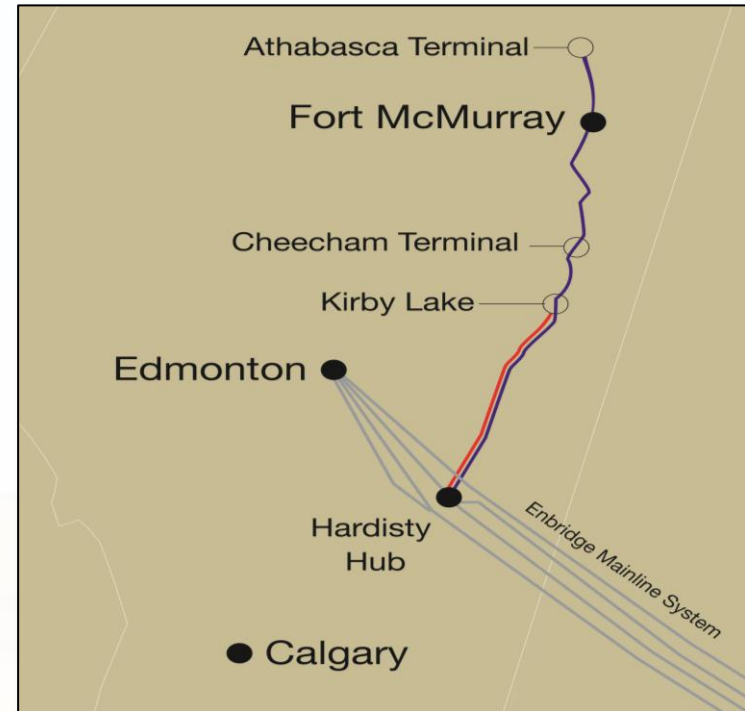
- Twinning of Line 19 for 450 kbpd up to 800 kbpd
- 346 km of 36" pipeline
- 2 pump stations

- **Budgeted cost:**

- \$1.2 billion

- **In-service date:**

- Q3 2015



- **Advantages:**

- Opposition engagement = no hearings
- 70% of costs secured prior to construction; frame agreement
- Familiar corridor

- **The Project:**

- Reversal and expansion of Line 9 to 300 kbpd

- **Budgeted cost:**

- \$0.3 billion

- **In-service date:**

- Line 9A Reversal:  
Completed Aug 2013
- Line 9B Reversal / Expansion:  
Q4 2014



- **Advantages:**

- Re-reversal of existing pipeline; limited scope
- Coalition driving support for reversal

- **The Project:**

- Expansion from 450 kbps to 800 kbps in 2 phases

- **Budgeted cost:**

- \$1.1 billion

- **In-service date:**

- Ph. 1 to 570 kbps: Q3 2014
- Ph. 2 to 800 kbps: Q3 2015



- **Advantages:**

- Leveraged existing footprint
- Implemented standardized design with frame agreement
- Secured US and Canadian construction permits; construction underway

- **The Project:**

- 590 miles of 36" pipeline
- Capacity: 600 kbpd
- 7 pump stations

- **Budgeted cost:**

- \$2.8 billion

- **In-service date:**

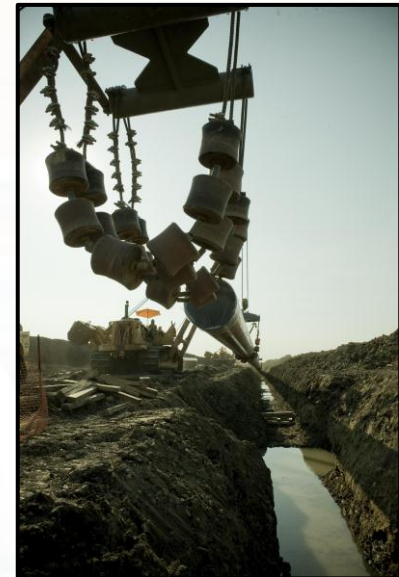
- Mid 2014



- **Advantages:**

- Disciplined regulatory plan = on-time permits
- Familiar corridor
- 70% of costs secured prior to construction

- Dedicated, scalable construction capability
- Rigorous controls and governance
- Disciplined processes
- Majority of projects tracking on time and budget
- Proven track record



# Q & A

## Major Projects